

HSDJETS®

2022 MFC-2085 PRO MULTI-FUNCTION FLIGHT CONTROLLER SYSTEM

Want to learn more about
the product video, pictures,
and other matters of
attention Please log in:
www.hsdr.com

QUICK START & MENU DESCRIPTION

EN



Product Guarantee Condition

During the production process, HSDJETS has conducted a series of rigorous tests on each MFC 2085 Multi-function Flight Controller System. We always attach great importance to the maintenance of the highest quality standards, which is reason we can give all our MFC-2085 products 3 months of assurance and the effective from the initial date of purchase. The warranty covers the material failure, which will be replaced by us free of charge. We wish to emphasize in particular that we reserve the right to replace if economic reasons can not be repaired. The purchase receipt and invoice is the proof of after-sales service. Free maintenance is limited to the warranty period only. Misuse and damage, such as antipolarity, overvoltage and humidity effects, which apply to failures due to server wear or excessive vibration, are not in the services options. Product quality assurance and after-sales service does not include any additional claims. HSDJETS only warrants that the MFC-2085 is repaired or replaced and will not be liable for any other loss or damage.

Product Features

01: MFC 2085 pro uses dual processor chips to improve the overall algorithm, which can be continuously upgraded to add functions.

02: The shell is made of all aluminum alloy CNC, solid and beautiful.

03: The dual power management system is adopted, with a 2S/7.4V input voltage design and a single 20A maximum current output. It can meet the needs of most aircraft in the market today, and has the function of automatic and seamless battery switching.

04: It supports the intelligent landing gear control system, which can adjust the working current of the landing gear, set the one button retraction and retraction of the cover plate and the landing gear, extend or shorten the closing or opening time of the cover plate, set the secondary action of the cover plate, and adjust the steering gear stroke of the cover plate.

05: It supports the electric brake control function, and it can also support the slow start brake to make the aircraft slide more smoothly.

06: Support the front wheel deviation correction function, which is more convenient for straight-line navigation operation;

07: It supports the function of stabilized

gyro, and provides support for junior middle class aviation model enthusiasts.

08: It has a light control system, which can be opened and closed by programming through the remote control system, and 5 groups of light flash modes can be called at will. Support the control of tail spray lighting system, and adjust the throttle servo position curve at will.

09: Support Futaba/horizon remote control dual S-BUS bus function 8 function channels can be set at will to facilitate the realization of required functions.

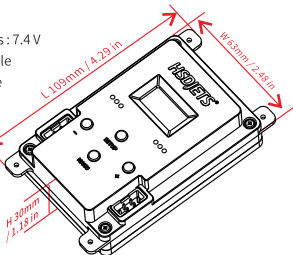
10: It supports the independent setting of positive and negative reversals, neutral position, stroke and other functions of all steering engines. The forward and reverse rotation of the set steering gear includes: aileron, lift, direction, flap, and cover plate steering gear; Set the neutral point of steering gear, including aileron, lift, direction and flap steering gear; The set steering gear stroke includes aileron, lift, direction and flap steering gear.

11: The font chip is added to support Chinese, English and other languages.

12: Up to 20 steering engines can be supported, and the channel allocation function can be customized at will.

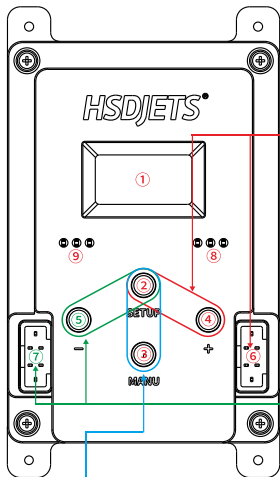
Product Specification

- * Working voltage: DC. 7.4V, 2S(lipo input)
- * Output voltage for Nav Lights & retracts Lights : 7.4 V
- * Output voltage for receiver: 6~7.4 V adjustable
- * Output voltage for servos: 6~7.4 V adjustable
- * Output voltage for e-retracts: 7.4 V
- * Output voltage for e-magnetic brake: 7.4 V
- * Output voltage for rear burner light: 7.4 V
- * Temperature range: -10~+75 °C
- * Dimension: 4.29in × 2.48in × 1.18in
- * Weight: 106 g / 3.74 oz



Panel and operation instructions

- | | |
|------------------------------|---|
| ① OLED Display | ⑥ Battery input port (for 2S Li-Po only) |
| ② Enter key | ⑦ Battery input port (for 2S Li-Po only) |
| ③ Exit / One key retractable | ⑧ Electric indicator lamp |
| ④ Selection (down) | ⑨ Electric indicator lamp |
| ⑤ Selection (up) | |



Operation tips:

When the ⑥ interface connected to the battery: Press the ② and ④ combination button for 3 seconds at the same time to start up.

When the ⑦ interface connected to the battery: Press the ② and ⑤ combination button for 3 seconds at the same time to start up.

Note: the combination button is only applicable to the corresponding unilateral battery.

- Long press the button ② and ③ for 3 seconds to shut down.
- Long press the button ② for 3 seconds to enter the menu.
- Long press the button ③ for 3 seconds to One key retractable.
- Press the button ② exit one key retractable .

Output & Input port Description(Take turbojet HJ-10 as an example)

SIGNAL OUTPUT

EB-02: WHEEL BRAKE2
 EB-01: WHEEL BRAKE1
 EG-03: GEAR3
 EG-02: GEAR2
 EG-01: GEAR1
 LS-07: INHIBIT
 LS-06: DOOR3
 LS-05: DOOR2
 LS-04: DOOR1
 LS-03: INHIBIT
 LS-02: INHIBIT
 LS-01: INHIBIT

NOTE: LS-01~LS-07 PORT
 SUPPORTCUSTOMIZATION

L01: AB LIGHT
 L02: AB LIGHT
 L03: ALWAYS ON
 L04: ALWAYS ON
 L05: SLOW BINKING
 L06: SLOW BINKING
 L07: FAST BINKING
 L08: FAST BINKING
 L09: DOUBLE BINKING
 L10: DOUBLE BINKING
 L11: TRIPLE BINKING
 L12: TRIPLE BINKING
 L13: GEAR LIGHT
 L14: GEAR LIGHT
 L15: GEAR LIGHT

SIGNAL OUTPUT

NOTE: L01~L15 PORT
 SUPPORTCUSTOMIZATION

SIGNAL INPUT

R15: NOT USED
 R14: SMOKE PUMP
 R13: GYRO SENSITIVITY
 R12: VECTOR
 R11: WHEEL BRAKE / NOSEWHEEL
 GYRO / AIR BRAKE
 R10: LIGHT
 R09: GEAR
 R08: CANARD

NOTE: R03~ R15 PORT
 SUPPORTCUSTOMIZATION

SIGNAL OUTPUT

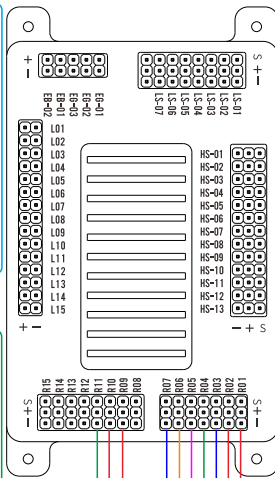
HS-01: AILERON1
 HS-02: AILERON2
 HS-03: ELEVATOR(LEFT WING)
 HS-04: ELEVATOR(RIGHT WING)
 HS-05: CANARD
 HS-06: NOSEWHEEL
 HS-07: RUDDER
 HS-08: RUDDER VECTOR
 HS-09: ELEVATOR VECTOR
 HS-10: SMOKE
 HS-11: INHIBIT
 HS-12: INHIBIT
 HS-13: THROTTLE

NOTE: HS-01~ HS-13 PORT
 SUPPORTCUSTOMIZATION

SIGNAL INPUT

R07: FLAP
 R06: THROTTLE / AB LIGHT/
 THR-ELE
 R05: RUDDER
 R04: ELEVATOR
 R03: AILERON
 R02: S-BUS2
 R01: S-BUS1

NOTE: R03~ R15 PORT
 SUPPORTCUSTOMIZATION



*R01&R02 IS S-BUS SIGNAL PARALLEL INTERFACE

* THIS PATCH CORD INCLUDES
 CONVENTIONAL PATCH CORD
 AND S-BUS PATCH CORD

Menu Description

Main Menu

- ▶ 1.RC Setup
- 2.RC Calibration
- 3.Gyro Setup
- 4.Servo Setup
- 5.Power Setup
- 6.Mixing
- 7.Gear Setup
- 8.Light Setup
- 9.Wheel Brake Setup
- 10.Air Brake Setup
- 11.Model Type
- 12.Reset Config
- 13.语言 / Language
- 14.Product Info

RC Setup

- ▶ 1.SBUS CH Assign
- 2.SRXL CH Assign
- 3.PWM CH Assign
- 4.RC CH Reverse
- 5.RC Bus Protocol

SBUS CH Assign

- ▶ 1.Aileron
- 2.Elevator
- 3.Rudder
- 4.Throttle
- 5.Throttle SW
- 6.Flap
- 7.Canard
- 8.Gear
- 9.Light
- 10.AB Light
- 11.THR>ELE
- 12.Wheel Brake
- 13.Nosewheel Gyro
- 14.Air Brake
- 15.Vector
- 16.Gyro Sensitivity
- 17.Spoiler
- 18.Smoke Pump
- 19.Aux1
- 20.Aux2
- 21.Aux3
- 22.Aux4
- 23.Aux5

Aileron

- Not Used
- CH1
- CH2
- CH3
- CH4
- CH5
- CH6
- CH7
- CH8
- CH9
- CH10
- CH11
- CH12
- CH13
- CH14
- CH15
- CH16
- CHDG1
- CHDG2

RC Setup

- 1.SBUS CH Assign
- ▶ 2.SRXL CH Assign
- 3.PWM CH Assign
- 4.RC CH Reverse
- 5.RC Bus Protocol

SRXL CH Assign

- ▶ 1.Aileron
- 2.Elevator
- 3.Rudder
- 4.Throttle
- 5.Throttle SW
- 6.Flap
- 7.Canard
- 8.Gear
- 9.Light
- 10.AB Light
- 11.THR>ELE
- 12.Wheel Brake
- 13.Nosewheel Gyro
- 14.Air Brake
- 15.Vector
- 16.Gyro Sensitivity
- 17.Spoiler
- 18.Smoke Pump
- 19.Aux1
- 20.Aux2
- 21.Aux3
- 22.Aux4
- 23.Aux5

Aileron

- Not Used
- CH1
- CH17
- CH18
- CH19
- CH20
- CH21
- CH22
- CH23
- CH24
- CH25
- CH26
- CH27
- CH28
- CH29
- CH30
- CH31
- CH32
- CH16

Menu Description

Main Menu

- ▶ 1.RC Setup
- 2.RC Calibration
- 3.Gyro Setup
- 4.Servo Setup
- 5.Power Setup
- 6.Mixing
- 7.Gear Setup
- 8.Light Setup
- 9.Wheel Brake Setup
- 10.Air Brake Setup
- 11.Model Type
- 12.Reset Config
- 13.语言/Language
- 14.Product Info

RC Setup

- 1.SBUS CH Assign
- 2.SRXL CH Assign
- ▶ 3.PWM CH Assign
- 4.RC CH Reverse
- 5.RC Bus Protocol

PWM CH Assign

- ▶ 1.Aileron
- 2.Elevator
- 3.Rudder
- 4.Throttle
- 5.Throttle SW
- 6.Flap
- 7.Canard
- 8.Gear
- 9.Light
- 10.AB Light
- 11.THR>ELE
- 12.Wheel Brake
- 13.Nosewheel Gyro
- 14.Air Brake
- 15.Vector
- 16.Gyro Sensitivity
- 17.Spoiler
- 18.Smoke Pump
- 19.Aux1
- 20.Aux2
- 21.Aux3
- 22.Aux4
- 23.Aux5

Aileron

- Not Used
- R03 Slot
- R04 Slot
- R05 Slot
- R06 Slot
- R07 Slot
- R08 Slot
- R09 Slot
- R10 Slot
- R11 Slot
- R12 Slot
- R13 Slot
- R14 Slot
- R15 Slot

RC Setup

- 1.SBUS CH Assign
- 2.SRXL CH Assign
- 3.PWM CH Assign
- ▶ 4.RC CH Reverse
- 5.RC Bus Protocol

RC CH Reverse

- ▶ 1.Aileron
- 2.Elevator
- 3.Rudder
- 4.Throttle
- 5.Throttle SW
- 6.Flap
- 7.Canard
- 8.Gear
- 9.Light
- 10.AB Light
- 11.THR>ELE
- 12.Wheel Brake
- 13.Nosewheel Gyro
- 14.Air Brake
- 15.Vector
- 16.Gyro Sensitivity
- 17.Spoiler
- 18.Smoke Pump
- 19.Aux1
- 20.Aux2
- 21.Aux3
- 22.Aux4
- 23.Aux5

Menu Description

Main Menu

- 1.RC Setup
- 2.RC Calibration
- 3.Gyro Setup
- 4.Servo Setup
- 5.Power Setup
- 6.Mixing
- 7.Gear Setup
- 8.Light Setup
- 9.Wheel Brake Setup
- 10.Air Brake Setup
- 11.Model Type
- 12.Reset Config
- 13.语言/Language
- 14.Product Info

RC Setup

- 1.SBUS CH Assign
- 2.SRXL CH Assign
- 3.PWM CH Assign
- 4.RC CH Reverse
- ▶ 5.RC Bus Protocol

RC Bus Protocol

- ▶ 1.FUTABA SBUS
- 2.SRXL V2
- 3.SRXL V1

Main Menu

- 1.RC Setup
- ▶ 2.RC Calibration
- 3.Gyro Setup
- 4.Servo Setup
- 5.Power Setup
- 6.Mixing
- 7.Gear Setup
- 8.Light Setup
- 9.Wheel Brake Setup
- 10.Air Brake Setup
- 11.Model Type
- 12.Reset Config
- 13.语言/Language
- 14.Product Info

RC Calibration

- ▶ 1.RC Calibration
- 2.Reset Calibration

RC Calibration

Full move joysticks and switches

RC Calibration

Move joysticks and switches to center

RC Calibration

- 1.RC Calibration
- ▶ 2.Reset Calibration

Reset Calibration

Yes
 No

Main Menu

- 1.RC Setup
- 2.RC Calibration
- ▶ 3.Gyro Setup
- 4.Servo Setup
- 5.Power Setup
- 6.Mixing
- 7.Gear Setup
- 8.Light Setup
- 9.Wheel Brake Setup
- 10.Air Brake Setup
- 11.Model Type
- 12.Reset Config
- 13.语言/Language
- 14.Product Info

Gyro Setup

- ▶ 1.Gyro Calibration
- 2.Nosewheel Gyro
- 3.Stabilized Gyro

Gyro Calibration

Calibrating

Note: When the control box is in calibration, do not shake the control box, or the calibration will fail.

Gyro Setup

- 1.Gyro Calibration
- ▶ 2.Nosewheel Gyro
- 3.Stabilized Gyro

Nosewheel Gyro

- ▶ 1.Status
- 2.Sensi tvl ty
- 3.Active Time
- 4.Turning Speed
- 5.Reverse

Status

Disable
 Enable

Nosewheel Gyro

- 1.Status
- ▶ 2.Sensi tvl ty
- 3.Active Time
- 4.Turning Speed
- 5.Reverse

Sensi tvl ty

65 %

Menu Description

Main Menu

- 1.RC Setup
- 2.RC Calibration
- ▶ 3.Gyro Setup
- 4.Servo Setup
- 5.Power Setup
- 6.Mixing
- 7.Gear Setup
- 8.Light Setup
- 9.Wheel Brake Setup
- 10.Air Brake Setup
- 11.Model Type
- 12.Reset Config
- 13.语言/Language
- 14.Product Info

Gyro Setup

- 1.Gyro Calibration
- ▶ 2.Nosewheel Gyro
- 3.Stabilized Gyro

Nosewheel Gyro

- 1.Status
- 2.Sensi tvi ty
- ▶ 3.Active Time
- 4.Turning Speed
- 5.Reverse

Active Time

20 s

Nosewheel Gyro

- 1.Status
- 2.Sensi tvi ty
- 3.Active Time
- ▶ 4.Turning Speed
- 5.Reverse

Turning Speed

10

Nosewheel Gyro

- 1.Status
- 2.Sensi tvi ty
- 3.Active Time
- 4.Turning Speed
- ▶ 5.Reverse

Reverse

- Disable
 Enable

Gyro Setup

- 1.Gyro Calibration
- 2.Nosewheel Gyro
- ▶ 3.Stabilized Gyro

Stabilized Gyro

- ▶ 1.Status
- 2.Sensi tvi ty
- 3.Roll Reverse
- 4.Pitch Reverse
- 5.Yaw Reverse

Status

- Disable
 Enable

Stabilized Gyro

- 1.Status
- ▶ 2.Sensi tvi ty
- 3.Roll Reverse
- 4.Pitch Reverse
- 5.Yaw Reverse

Sensi tvi ty

50 %

Stabilized Gyro

- 1.Status
- 2.Sensi tvi ty
- ▶ 3.Roll Reverse
- 4.Pitch Reverse
- 5.Yaw Reverse

Roll Reverse

- Disable
 Enable

Stabilized Gyro

- 1.Status
- 2.Sensi tvi ty
- 3.Roll Reverse
- ▶ 4.Pitch Reverse
- 5.Yaw Reverse

Pitch Reverse

- Disable
 Enable

Menu Description

Main Menu

- 1.RC Setup
- 2.RC Calibration
- ▶ 3. Gyro Setup
- 4.Servo Setup
- 5.Power Setup
- 6.Mixing
- 7.Gear Setup
- 8.Light Setup
- 9.Wheel Brake Setup
- 10.Air Brake Setup
- 11.Model Type
- 12.Reset Config
- 13.语言/Language
- 14.Product Info

Gyro Setup

- 1.Gyro Calibration
- 2.Nosewheel Gyro
- ▶ 3.Stabilized Gyro

Stabilized Gyro

- 1.Status
- 2.Sensitivity
- 3.Roll Reverse
- 4.Pitch Reverse
- ▶ 5.Yaw Reverse

Yaw Reverse

- Disable
 Enable

Main Menu

- 1.RC Setup
- 2.RC Calibration
- 3.Gyro Setup
- ▶ 4. Servo Setup
- 5.Power Setup
- 6.Mixing
- 7.Gear Setup
- 8.Light Setup
- 9.Wheel Brake Setup
- 10.Air Brake Setup
- 11.Model Type
- 12.Reset Config
- 13.语言/Language
- 14.Product Info

Servo Setup

- ▶ 1.HS-01 Slot
- 2.HS-02 Slot
- 3.HS-03 Slot
- 4.HS-04 Slot
- 5.HS-05 Slot
- 6.HS-06 Slot
- 7.HS-07 Slot
- 8.HS-08 Slot
- 9.HS-09 Slot
- 10.HS-10 Slot
- 11.HS-11 Slot
- 12.HS-12 Slot
- 13.HS-13 Slot
- 14.LS-01 Slot
- 15.LS-02 Slot
- 16.LS-03 Slot
- 17.LS-04 Slot
- 18.LS-05 Slot
- 19.LS-06 Slot
- 20.LS-07 Slot

HS-01 Slot

- ▶ 1.Signal Assign
- 2.Travel/SubTrim
- 3.Reverse

Signal Assign

- ▶ 1.Inhibit
- 2.Aileron1
- 3.Aileron2
- 4.Elevator
- 5.V-tail1
- 6.V-tail2
- 7.Rudder
- 8.Nosewheel
- 9.Rudder Vector
- 10.Elevator Vector
- 11.Throttle1
- 12.Throttle2
- 13.Flap
- 14.Canard
- 15.Door1
- 16.Door2
- 17.Door3
- 18.Gear luck
- 19.Spoiler
- 20.Smoke Pump
- 21.Aux1
- 22.Aux2
- 23.Aux3
- 24.Aux4
- 25.Aux5

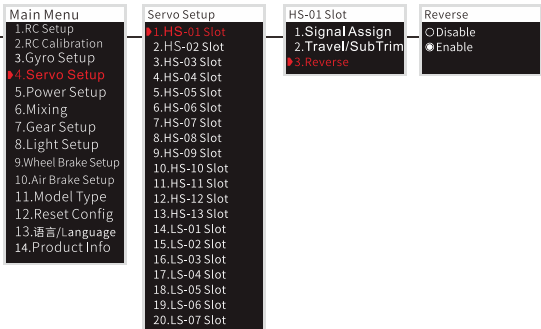
HS-01 Slot

- 1.SignalAssign
- ▶ 2.Travel / SubTrim
- 3.Reverse

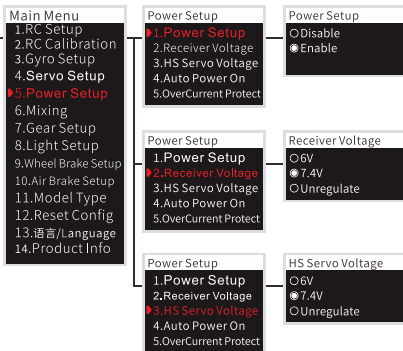
Travel/SubTrim

- L SubTrim R
- | | | |
|------|-----|------|
| 50.0 | 0.0 | 50.0 |
|------|-----|------|

Menu Description



Note: HS-01 Slot ~ LS-07 Slot have the same settings.



Menu Description

Main Menu

- 1.RC Setup
- 2.RC Calibration
- 3.Gyro Setup
- 4.Servo Setup
- ▶ 5.Power Setup
- 6.Mixing
- 7.Gear Setup
- 8.Light Setup
- 9.Wheel Brake Setup
- 10.Air Brake Setup
- 11.Model Type
- 12.Reset Config
- 13.语言/Language
- 14.Product Info

Power Setup

- 1.Power Setup
- 2.Receiver Voltage
- 3.HS Servo Voltage
- ▶ 4.Auto Power On
- 5.OverCurrent Protect

Auto Power On

- Disable
- Enable

Power Setup

- 1.Power Setup
- 2.Receiver Voltage
- 3.HS Servo Voltage
- 4.Auto Power On
- ▶ 5.OverCurrent Protect

OverCurrent Protect

- Disable
- Enable

Main Menu

- 1.RC Setup
- 2.RC Calibration
- 3.Gyro Setup
- 4.Servo Setup
- 5.Power Setup
- ▶ 6.Mixing
- 7.Gear Setup
- 8.Light Setup
- 9.Wheel Brake Setup
- 10.Air Brake Setup
- 11.Model Type
- 12.Reset Config
- 13.语言/Language
- 14.Product Info

Mixing

- ▶ 1.THR>ELE
- 2.FLAP>ELE
- 3.Flap Speed

THR>ELE

- ▶ 1.Status
- 2.Start
- 3.Rate
- 4.Reverse

Status

- Disable
- Enable

THR>ELE

- 1.Status
- ▶ 2.Start
- 3.Rate
- 4.Reverse

Start

10 %

THR>ELE

- 1.Status
- 2.Start
- ▶ 3.Rate
- 4.Reverse

Rate

0.0 %

THR>ELE

- 1.Status
- 2.Start
- 3.Rate
- ▶ 4.Reverse

Reverse

- Disable
- Enable

Mixing

- 1.THR>ELE
- ▶ 2.FLAP>ELE
- 3.Flap Speed

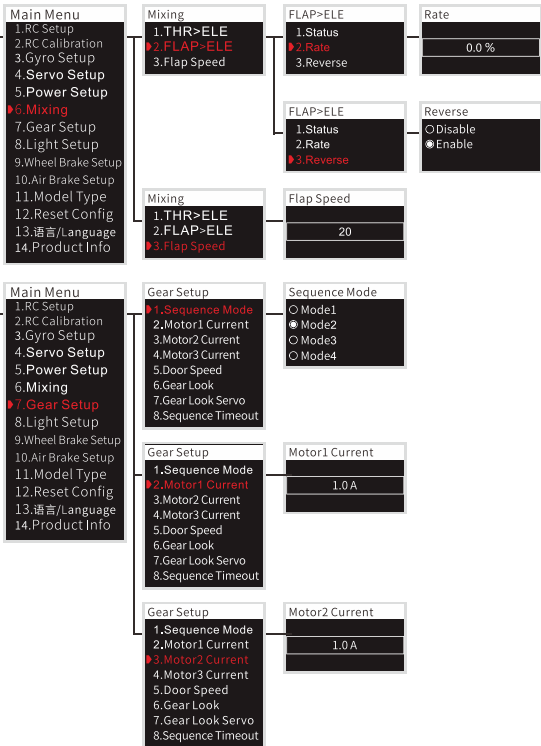
FLAP>ELE

- ▶ 1.Status
- 2.Rate
- 3.Reverse

Status

- Disable
- Enable

Menu Description



Menu Description

Main Menu

- 1.RC Setup
- 2.RC Calibration
- 3.Gyro Setup
- 4.Servo Setup
- 5.Power Setup
- 6.Mixing
- ▶ 7.Gear Setup
- 8.Light Setup
- 9.Wheel Brake Setup
- 10.Air Brake Setup
- 11.Model Type
- 12.Reset Config
- 13.语言/Language
- 14.Product Info

Gear Setup

- 1.Sequence Mode
- 2.Motor1 Current
- 3.Motor2 Current
- ▶ 4.Motor3 Current
- 5.Door Speed
- 6.Gear Look
- 7.Gear Look Servo
- 8.Sequence Timeout

Motor3 Current

1.0 A

Gear Setup

- 1.Sequence Mode
- 2.Motor1 Current
- 3.Motor2 Current
- 4.Motor3 Current
- ▶ 5.Door Speed
- 6.Gear Look
- 7.Gear Look Servo
- 8.Sequence Timeout

Door Speed

5.0

Gear Setup

- 1.Sequence Mode
- 2.Motor1 Current
- 3.Motor2 Current
- 4.Motor3 Current
- 5.Door Speed
- ▶ 6.Gear Look
- 7.Gear Look Servo
- 8.Sequence Timeout

Gear Look

- Disable
- Enable

Gear Setup

- 1.Sequence Mode
- 2.Motor1 Current
- 3.Motor2 Current
- 4.Motor3 Current
- 5.Door Speed
- 6.Gear Look
- ▶ 7.Gear Look Servo
- 8.Sequence Timeout

Gear Look Servo

- Normal Servo
- AntiBlocking Servo

Gear Setup

- 1.Sequence Mode
- 2.Motor1 Current
- 3.Motor2 Current
- 4.Motor3 Current
- 5.Door Speed
- 6.Gear Look
- 7.Gear Look Servo
- ▶ 8.Sequence Timeout

Sequence Timeout

15.0 S

Menu Description

Main Menu

- 1.RC Setup
- 2.RC Calibration
- 3.Gyro Setup
- 4.Servo Setup
- 5.Power Setup
- 6.Mixing
- 7.Gear Setup
- ▶ 8.Light Setup
- 9.Wheel Brake Setup
- 10.Air Brake Setup
- 11.Model Type
- 12.Reset Config
- 13.语言/Language
- 14.Product Info

Light Setup

- ▶ 1.RC Control
- 2.CHL1-L2
- 3.CHL3-L4
- 4.CHL5-L6
- 5.CHL7-L8
- 6.CHL9-L10
- 7.CHL11-L12
- 8.CHL11-L5

RC Control

- Disable
- Enable

Light Setup

- 1.RC Control
- ▶ 2.L1-L2 Slot
- 3.L3-L4 Slot
- 4.L5-L6 Slot
- 5.L7-L8 Slot
- 6.L9-L10 Slot
- 7.L11-L12 Slot
- 8.L13-L15 Slot

L1-L2 Slot

- Inhibit
- Always On
- Slow Binking
- Fast Binking
- Double Binking
- Triple Binking
- Gear Light
- AB Light

Note: L1 Slot ~ L15 Slot have the same settings.

Main Menu

- 1.RC Setup
- 2.RC Calibration
- 3.Gyro Setup
- 4.Servo Setup
- 5.Power Setup
- 6.Mixing
- 7.Gear Setup
- 8.Light Setup
- ▶ 9.Wheel Brake Setup
- 10.Air Brake Setup
- 11.Model Type
- 12.Reset Config
- 13.语言/Language
- 14.Product Info

Wheel Brake Setup

- ▶ 1.W1 Brake Strength
- 2.W2 Brake Strength
- 3.Gradual Brake
- 4.Gradual Value
- 5.Max Working Time

W1 Brake Strength

100.0 %

Wheel Brake Setup

- 1.W1 Brake Strength
- ▶ 2.W2 Brake Strength
- 3.Gradual Brake
- 4.Gradual Value
- 5.Max Working Time

W2 Brake Strength

100.0 %

Wheel Brake Setup

- 1.W1 Brake Strength
- 2.W2 Brake Strength
- ▶ 3.Gradual Brake
- 4.Gradual Value
- 5.Max Working Time

Gradual Brake

- Disable
- Enable

Wheel Brake Setup

- 1.W1 Brake Strength
- 2.W2 Brake Strength
- 3.Gradual Brake
- ▶ 4.Gradual Value
- 5.Max Working Time

Gradual Value

1.0

Menu Description

Main Menu

- 1.RC Setup
- 2.RC Calibration
- 3.Gyro Setup
- 4.Servo Setup
- 5.Power Setup
- 6.Mixing
- 7.Gear Setup
- 8.Light Setup
- ▶ 9.Wheel Brake Setup
- 10.Air Brake Setup
- 11.Model Type
- 12.Reset Config
- 13.语言/Language
- 14.Product Info

Wheel Brake Setup

- 1.W1 Brake Strength
- 2.W2 Brake Strength
- 3.Gradual Brake
- 4.Gradual Value
- ▶ 5.Max Working Time

Max Working Time

120.0 S

Main Menu

- 1.RC Setup
- 2.RC Calibration
- 3.Gyro Setup
- 4.Servo Setup
- 5.Power Setup
- 6.Mixing
- 7.Gear Setup
- 8.Light Setup
- 9.Wheel Brake Setup
- ▶ 10.Air Brake Setup
- 11.Model Type
- 12.Reset Config
- 13.语言/Language
- 14.Product Info

Air Brake Setup

- ▶ 1.Wings Used
- 2.Safety
- 3.Aileron Rate
- 4.Elevator Rate
- 5.Canard Rate
- 6.Aileron 1 Reverse
- 7.Aileron 2 Reverse
- 8.Elevator Reverse
- 9.Canard Reverse

Wings Used

- Aileron
 Elevator
 Canard

Air Brake Setup

- 1.Wings Used
- ▶ 2.Safety
- 3.Aileron Rate
- 4.Elevator Rate
- 5.Canard Rate
- 6.Aileron 1 Reverse
- 7.Aileron 2 Reverse
- 8.Elevator Reverse
- 9.Canard Reverse

Safety

Valid On Gear Down

Air Brake Setup

- 1.Wings Used
- 2.Safety
- ▶ 3.Aileron Rate
- 4.Elevator Rate
- 5.Canard Rate
- 6.Aileron 1 Reverse
- 7.Aileron 2 Reverse
- 8.Elevator Reverse
- 9.Canard Reverse

Aileron Rate

100.0 %

Menu Description

Main Menu

- 1.RC Setup
- 2.RC Calibration
- 3.Gyro Setup
- 4.Servo Setup
- 5.Power Setup
- 6.Mixing
- 7.Gear Setup
- 8.Light Setup
- 9.Wheel Brake Setup
- ▶ 10.Air Brake Setup
- 11.Model Type
- 12.Reset Config
- 13.语言/Language
- 14.Product Info

Air Brake Setup

- 1.Wings Used
- 2.Safety
- 3.Aileron Rate
- ▶ 4.Elevator Rate
- 5.Canard Rate
- 6.Aileron 1 Reverse
- 7.Aileron 2 Reverse
- 8.Elevator Reverse
- 9.Canard Reverse

Elevator Rate

100.0 %

Air Brake Setup

- 1.Wings Used
- 2.Safety
- 3.Aileron Rate
- 4.Elevator Rate
- ▶ 5.Canard Rate
- 6.Aileron 1 Reverse
- 7.Aileron 2 Reverse
- 8.Elevator Reverse
- 9.Canard Reverse

Canard Rate

100.0 %

Air Brake Setup

- 1.Wings Used
- 2.Safety
- 3.Aileron Rate
- 4.Elevator Rate
- 5.Canard Rate
- ▶ 6.Aileron 1 Reverse
- 7.Aileron 2 Reverse
- 8.Elevator Reverse
- 9.Canard Reverse

Aileron 1 Reverse

Disable
 Enable

Air Brake Setup

- 1.Wings Used
- 2.Safety
- 3.Aileron Rate
- 4.Elevator Rate
- 5.Canard Rate
- 6.Aileron 1 Reverse
- ▶ 7.Aileron 2 Reverse
- 8.Elevator Reverse
- 9.Canard Reverse

Aileron 2 Reverse

Disable
 Enable

Menu Description

Main Menu

- 1.RC Setup
- 2.RC Calibration
- 3.Gyro Setup
- 4.Servo Setup
- 5.Power Setup
- 6.Mixing
- 7.Gear Setup
- 8.Light Setup
- 9.Wheel Brake Setup
- ▶ 10. Air Brake Setup
- 11.Model Type
- 12.Reset Config
- 13.语言/Language
- 14.Product Info

Air Brake Setup

- 1.Wings Used
- 2.Safety
- 3.Aileron Rate
- 4.Elevator Rate
- 5.Canard Rate
- 6.Aileron 1 Reverse
- 7.Aileron 2 Reverse
- ▶ 8.Elevator Reverse
- 9.Canard Reverse

Elevator Reverse

- Disable
 Enable

Air Brake Setup

- 1.Wings Used
- 2.Safety
- 3.Aileron Rate
- 4.Elevator Rate
- 5.Canard Rate
- 6.Aileron 1 Reverse
- 7.Aileron 2 Reverse
- 8.Elevator Reverse
- ▶ 9.Canard Reverse

Canard Reverse

- Disable
 Enable

Main Menu

- 1.RC Setup
- 2.RC Calibration
- 3.Gyro Setup
- 4.Servo Setup
- 5.Power Setup
- 6.Mixing
- 7.Gear Setup
- 8.Light Setup
- 9.Wheel Brake Setup
- 10.Air Brake Setup
- ▶ 11.Model Type
- 12.Reset Config
- 13.语言/Language
- 14.Product Info

Model Type

- Fixed Wing
 Delta Wing
 V-Tail
 HJ-10
 HT-45
 HT-45(Red Hawk)
 SV FRP
 HL-39
 HT-33
 HF-16
 HF-86
 SV EPO
 Mirage 2000
 120 SV FRP
 120 HT-33
 120 HL-39
 120 HF-86
 105 SV EPO
 105 HF-16
 90×4 HBY-747
 90×2 HME-262

Menu Description

Main Menu

- 1.RC Setup
- 2.RC Calibration
- 3.Gyro Setup
- 4.Servo Setup
- 5.Power Setup
- 6.Mixing
- 7.Gear Setup
- 8.Light Setup
- 9.Wheel Brake Setup
- 10.Air Brake Setup
- 11.Model Type
- ▶ 12.Reset Config
- 13.语言/Language
- 14.Product Info

Reset Config

- Yes
- No

Main Menu

- 1.RC Setup
- 2.RC Calibration
- 3.Gyro Setup
- 4.Servo Setup
- 5.Power Setup
- 6.Mixing
- 7.Gear Setup
- 8.Light Setup
- 9.Wheel Brake Setup
- 10.Air Brake Setup
- 11.Model Type
- 12.Reset Config
- ▶ 13.语言/Language
- 14.Product Info

语言/Language

- English
- 简体中文
- Not Set

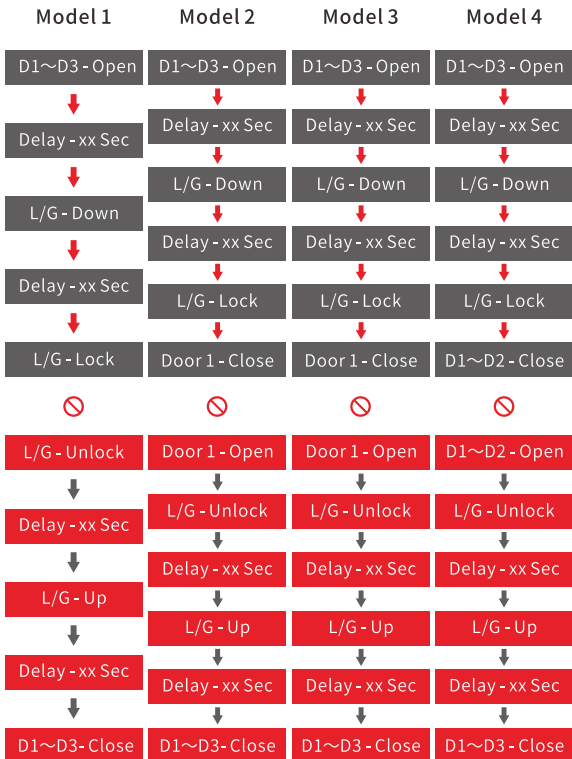
Main Menu

- 1.RC Setup
- 2.RC Calibration
- 3.Gyro Setup
- 4.Servo Setup
- 5.Power Setup
- 6.Mixing
- 7.Gear Setup
- 8.Light Setup
- 9.Wheel Brake Setup
- 10.Air Brake Setup
- 11.Model Type
- 12.Reset Config
- 13.语言/Language
- ▶ 14.Product Info

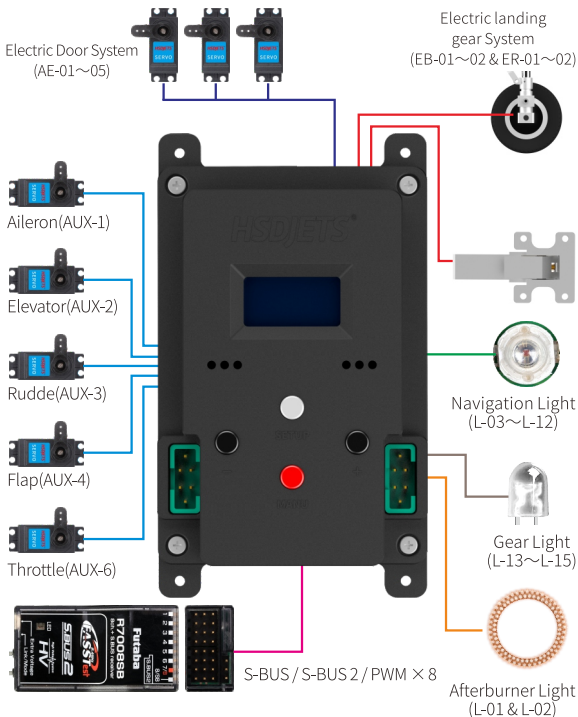
Reset Config

HSDJETS
2022 MFC-2085 PRO
V2.0

Sequential action description



Installation Diagram



Packing list



MFC-2085 pro × 1



Signal line × 8



PWA2×12mm
Screw × 4



XT60 Plug Power Wire × 2



Manual × 1



扫码关注，谢谢支持！

🌐 www.hsdrc.com

✉ sales1@hsdjetshuang sai.com

📍 Company address : HSDJETS, 4 Fushou Road, Shangsha community, Chang'an Town, Dongguan City, Guangdong Province, China 📮 Post 📮 523867 📮

📍 Production address : Building F6, Standardized Factory Buildings , Xixiu Industrial Park, Xixiu District, Anshun City, Guizhou Province, China (Post: 561099)